

**AMENDMENT NO. 1
TO AGREEMENT BETWEEN
ZIONS PUBLIC FINANCE, INC.
AND WEBER COUNTY
FOR
PROFESSIONAL SERVICES**

IMPACT FEE FACILITY PLAN AND IMPACT FEE ANALYSIS

The AGREEMENT for Professional Services by and between WEBER COUNTY (COUNTY) and ZIONS PUBLIC FINANCE, INC. (CONSULTANT) originally dated July 7, 2022, is hereby amended and supplemented as of the last date signed below, to include the following: CONSULTANT to update the Impact Fee Facilities Plans for the Sewer and Road Impact Fees and update the Impact Fee Analysis for the Sewer, Road, and Storm Drain Impact Fees, as shown in the attached Exhibit. CONSULTANT to attend all the necessary meetings to get them through the approval process.

Amendments:

SCOPE OF WORK

The attached Exhibit shows additions to the work to be done.

FEE

COUNTY shall pay \$9,150.00 for the additional work, as shown on the attached Exhibit.

Aside from the changes noted above, the terms of the original agreement shall remain unchanged.

IN WITNESS WHEREOF, the parties have signed and subscribed their names hereon and have caused this agreement to be duly executed.

WEBER COUNTY

By: _____
Commission Chair James H. "Jim" Harvey

Date: _____

Recommended for Approval:

Gary Myers, P.E.
County Engineer

ATTEST:

By: _____

Title: _____

CONSULTANT:
ZIONS PUBLIC FINANCE, INC.

Signature: *Susan Becker*

Printed Name: Susan Becker

Title: Vice President

Date: 12 August 2024



Weber County
Sewer and Storm Water Impact Fee Facilities Plan - Amendment No. 1
ENSIGN ENGINEERING AND LAND SURVEYING
PROJECT FEE ESTIMATE, PREPARED June 28, 2024

TASK

Owner: Weber County
Project: Sewer and Storm Water Impact Fee Facilities Plan - Amendment No. 1

		PERSONNEL, ROLES, AND HOURLY RATES	
1) Robert Rousselle, PE - QA/QC & PM	\$155	7)	
2) Matthew Sanford, EIT - Project Engineer	\$110	8)	
3)		9)	
4)		10)	
5)		11)	
6)		12)	

Task No.	Task Description	LABOR HOURS BY PERSONNEL												Total Hours	Labor Charges	Direct Reimbursable & Sub-consult. Expenses	Totals
		1	2	3	4	5	6	7	8	9	10	11	12				
		\$155 RJR	\$110 MS														
Step 1	Sewer System Impact Fee Facilities Plan																
Task 1	Sewer System IFFP Update																
1.1	Add proposed lift station and force main to CAD and define service areas (10-year and build-out). Locate 2 subdivision drawings in CAD to define 10-year service area.		5											5	\$550		\$550
1.2	Add proposed gravity sewer line (from lift station to existing CWSID line) to CAD and define service area (build-out). Determine any existing homes on septic that would connect to this line.		3											3	\$330		\$330
1.3	Update excel tables with lift station and gravity line. Calculate 10-year ERUs and build-out ERUs. Calculate cost estimate for gravity line (cost estimate for lift station was provided by Chad). Calculate proportionate shares.	0.5	5											6	\$630		\$630
1.4	Add additional sewer lines for 2 subdivisions to CAD and define service areas (10-year and build-out). Determine any existing homes on septic that would connect to these lines.		5											5	\$550		\$550
1.5	Update excel tables with additional sewer lines. Calculate 10-year ERUs and build-out ERUs. Calculate cost estimates. Calculate proportionate shares.	0.5	3											4	\$410		\$410
1.6	Update figure and exhibits.	0.5	5											6	\$630		\$630
1.7	Update report and QA/QC.	2	4											6	\$750		\$750
	Subtotal Step 1	3.5	30											34	\$3,840		\$3,850
	Totals	3.5	30											34	\$3,840		\$3,850
	Critical Path Task																
	Meeting Task																Fixed Fee

PROPOSAL

TO: Chad Meyerhoffer
Weber County Engineering

FROM: Shane Eller, P.E.
Horrocks.

DATE: June 10, 2024

PN 24.21.B

SUBJECT: Weber County IFFP with TDM Update Proposal

Thank you for inviting Horrocks Engineers to submit a proposal to perform traffic engineering services for the subject project. This scope includes updating the current IFFP document for the 2200 South and 4300 West area. The following provides the scope of work and fee associated with this project:

SCOPE OF WORK

Update Travel Demand Model

Horrocks will use Weber County's existing Travel Demand Model (TDM) as the baseline for the update. The following will be completed as part of the project:

- Calibrate the TDM from the new count data provided by the county along 2200 South between 3500 West and 4300 West
- Update the socioeconomic (SE) data to include the new West Field High School and run the TDM for the 10-year using the updated SE data.

Assumptions:

- No additional TAZ splits within the TDM
- Weber County will provide the number of students and size of the high school.

Update IFFP Document

Horrocks will update the IFFP document per the changes identified by the county, see attached. This will include the following:

- Update the roadway network per the attached which will impact the following maps:
 - Figure 3 – West Weber 10-Year Project Map
 - Figure 4 – Ogden Valley 10-Year Project Map
- Update the calculations to determine the proportion of projects attributed to new development which impacts the following tables:
 - Table 2 - Impact Fee Facilities Plan Project Funding Sources
 - Table 4 - Excess Capacity Cost Reduction Calculations
 - Table 5 - Excess User Share Cost Reduction Calculation
 - Table 6 - Proportion of Projects Attributed to New Development
 - Table 7 – Cost Attributable to Growth
- Assumptions:
 - Assume up to one (1) round for revisions based on client feedback.

Prepared by Horrocks Engineers

801-763-5100 | info@horrocks.com | horrocksendeers.com
2162 West Grove Parkway, Suite 100, Pleasant Grove, UT 84062



Meetings

Horrocks did NOT include any meetings in this proposal.

The lump sum cost to complete the work described is not to exceed **\$1,800.00** including all direct costs such as travel, phone, fax, computer, etc. **Additional work due to site plan changes, changes in scope, and/or additional project meetings will be performed/attended only at your request per our hourly rate schedule.**

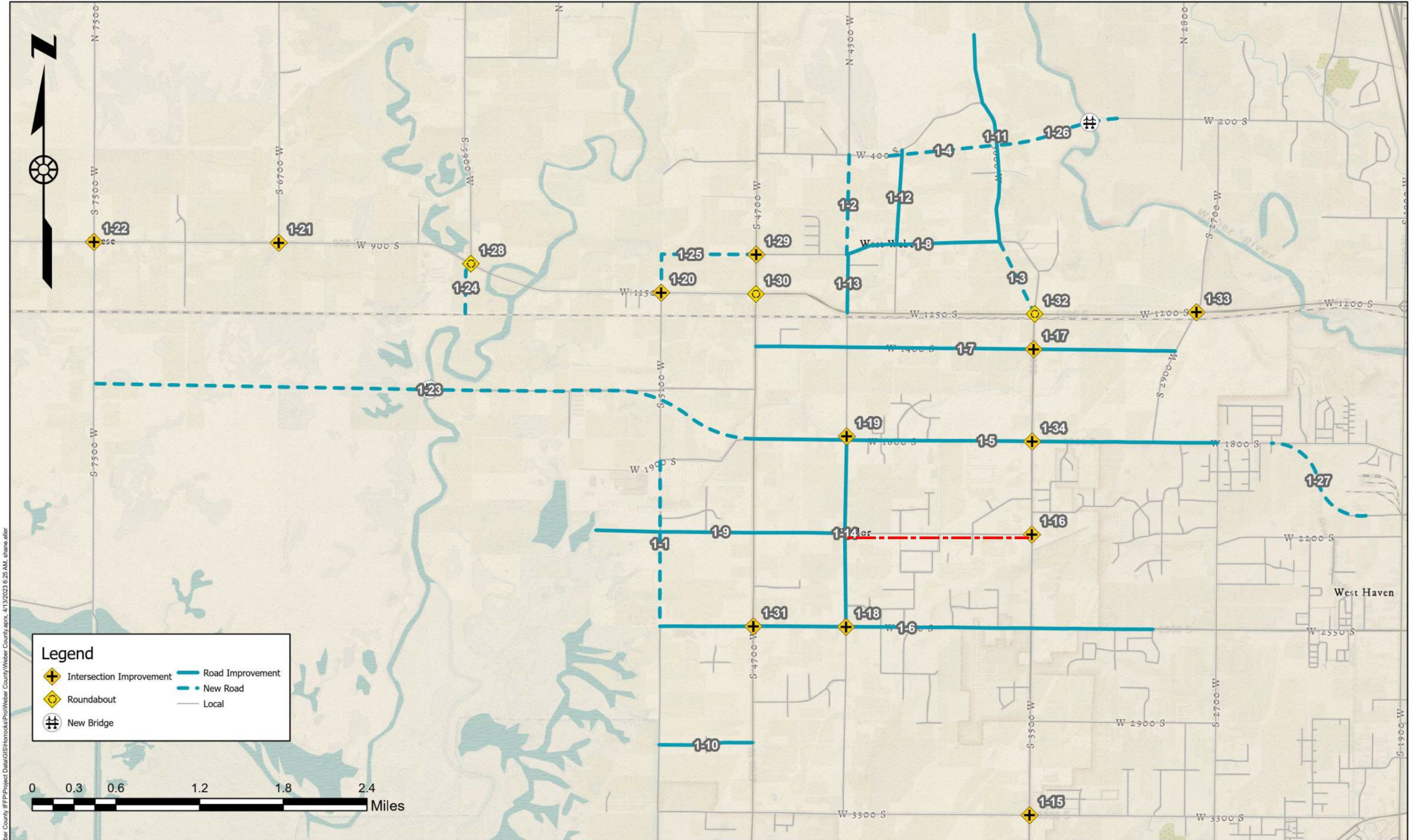
If you have any questions, please feel free to contact Horrocks.

Sincerely,

Shane Eller, P.E.

Authorization to Proceed	
Approved by:	_____
	Signature

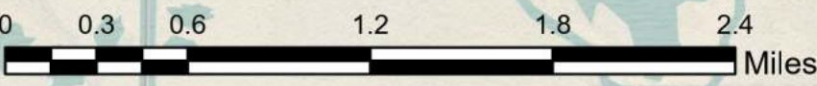
	Please Print
Date:	



Q:\2022\UT-5735-22 Weber County IFPP\Project Data\GIS\Horrocks\Proj\Weber County.aprx, 4/13/2023 6:25 AM, share, after

Legend

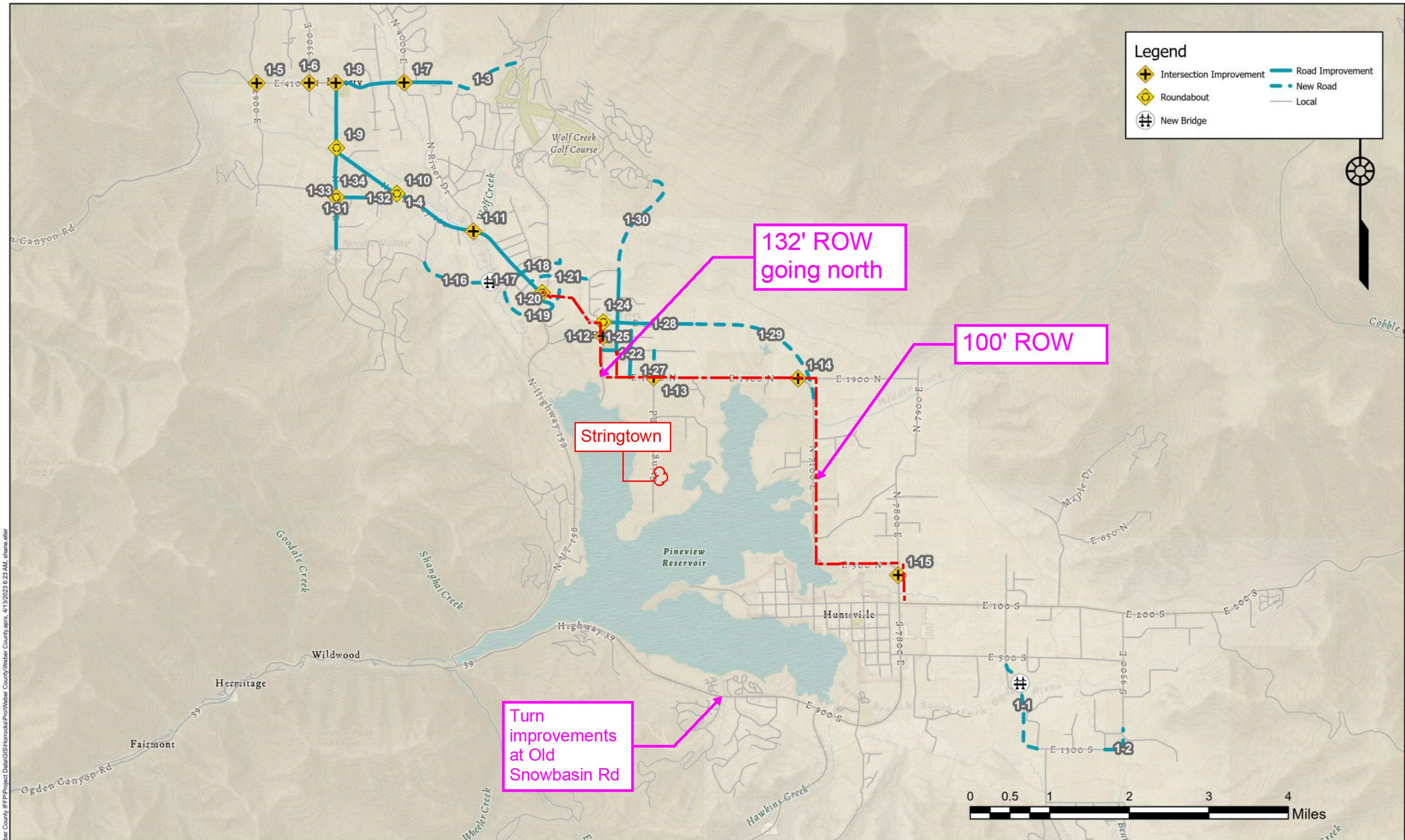
- ◆ Intersection Improvement
- ◆ Roundabout
- ⌘ New Bridge
- Road Improvement
- - - New Road
- Local



2162 West Grove Parkway
Suite 400
Pleasant Grove, UT 84062
(801) 763-5100

Weber County Impact Fee Facilities Plan
West Weber 10-Year Project Map

DATE	4/13/2023
DRAWN	SEE
Figure 3	



Q:\2022\UT-5735-22 Weber County IFPP\Project Data\GIS\Horrocks\Proj\Weber County.aprx, 4/13/2023 6:23 AM, share offer



2162 West Grove Parkway
Suite 400
Pleasant Grove, UT 84062
(801) 763-5100

Weber County Impact Fee Facilities Plan
Ogden Valley 10-Year Project Map

DATE	4/13/2023
DRAWN	SEE
Figure 4	

ZIONS PUBLIC FINANCE, INC.

To update the Impact Fee Analysis for the Sewer, Road, and Storm Drain impact fees and to attend the necessary meetings to take them through the approval process.

LUMP SUM

\$3,500